

MC350

ELECTRIC BATTERY OPERATED CRANE

MAX CAPACITY 35 t

Pick&Carry Cranes



JMG Cranes s.r.l. a socio unico
"Società sottoposta ad attività di direzione e coordinamento di Compart Italia srl"

Sede Legale: Via Dante, 15 - 26100 CREMONA | Uffici e stabilimento: Via Sito Nuovo, 14 - 29010 Sarmato - PC - Italy
C.F. e p.iva 05896090965 | Capitale Sociale Euro 84.000,00 i.v.
T +39 0523 8486 | F. +39 0523 848000 | E. info@jmgcranes.com | www.jmgcranes.com

Edition 01/2016
© 2016 JMG Cranes srl All rights reserved



MC350 35 t

DRIVING:	Front by nr. 2 12kW 96V AC electric motors insulation class H.
BATTERY:	96V 1395Ah. LED battery meter indicator and electrolyte level indicator on dashboard. Autonomy: 8 working hours.
BRAKE	Hydraulically foot controlled service brake on all wheels, hydraulically automatic or button controlled parking brake on front wheels.
DRIVER'S PROTECTION:	In quality steel, full visibility with safety glass on top, front, rear and right side of the operator.
FRAME:	Fabricated from preformed and welded quality steel plate with built-in counterweight.
WHEELS:	Front nr. 4 superelastic 355/50-20" Rear nr. 4 superelastic 355x50-20"
BOOM:	3 elements boom, fully hydraulically proportionally telescoping, fabricated from preformed and welded quality steel plate. Boom tilting angle: +60°/-7°.
REMOVABLE COUNTERWEIGHTS:	Designed for fast assembling and disassembly, to optimize the load on the axles and the pressure to ground.
HYDRAULIC SYSTEM:	Powered by a silenced gear pump (35kW). Actuators controlled by a proportional electrical controlled distributor complete with electronic joystick. Filter and safety valves. 23 MPa working pressure.
STEERING:	Rear steering by hydraulic motor controlled by hydrostatic power steering system complete with load sensing priority valve.
MOTOR PUMPE:	1x32W 96V AC, 1X23KW 96V AC insulation class H.
L.M.I.:	Electronic load moment indicator system complying to CE safety standards, complete with display showing: load lifted, maximum admitted load, tilting percentage, operating radius, angle, outreach and complete with warning lights of the operating status.
WEIGHT:	Kg. 29800 including kg. 7300 of removable counterweight; outriggers (when present) kg 12000
OPTIONALS:	Hydraulic winch, front outriggers, manually or hydraulically bending jib, men basket, chain hoist, fork attachment, on board battery charger, battery watering system, closed cabin, ATEX conversations, customer color, non-marking tires, radio remote control.
CRANE CLASSIFICATION ACCORDING TO UNI ISO 4301-1:	A3
EU STANDARDS CE:	2006/42 CE MD - 2014/30 CE EMC - 2014/35 CE LVD - 2000/14 and subsequent modifications.
REFERENCE STANDARDS:	EN 13000:2014 UNI ISO 4301-2:2011 and subsequent modifications.
REFERENCE STANDARD:	EN 13000:2014 UNI ISO 4301-2:2011 and subsequent modifications.

Images shown in this brochure are indicative and dependable on the level of equipment. Models may differ from the pictures shown.
Data above are subject to be changed without any previous notice.



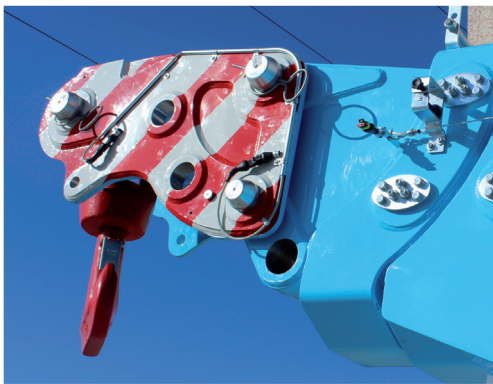
FRONT OUTRIGGERS (OPTION ON DEMAND)
CLOSED



FRONT OUTRIGGERS (OPTION ON DEMAND)
IN USE



MOBILE COUNTERWEIGHTS



MOBILE HEAD

DIAGRAMMA PORTATE

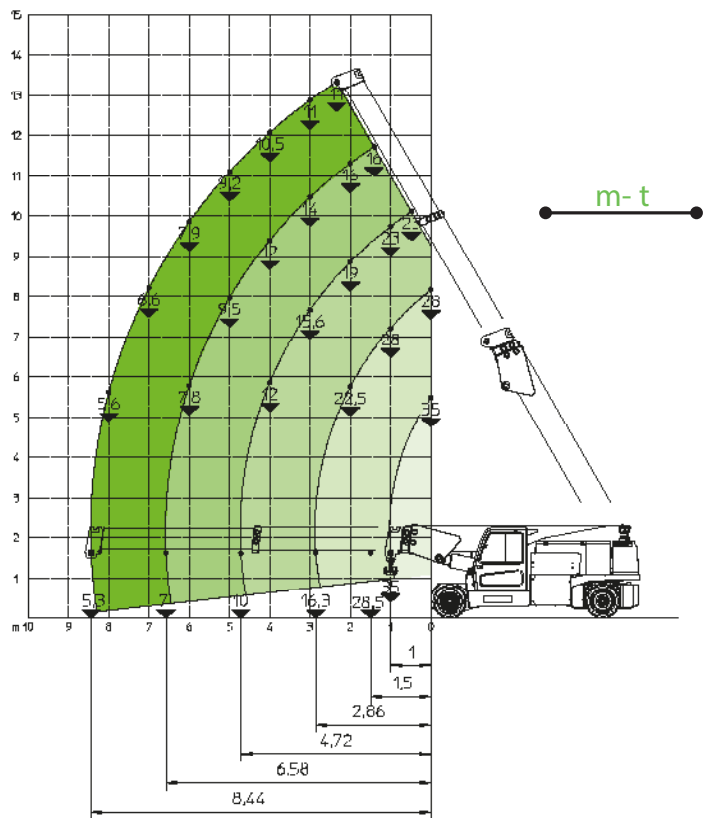
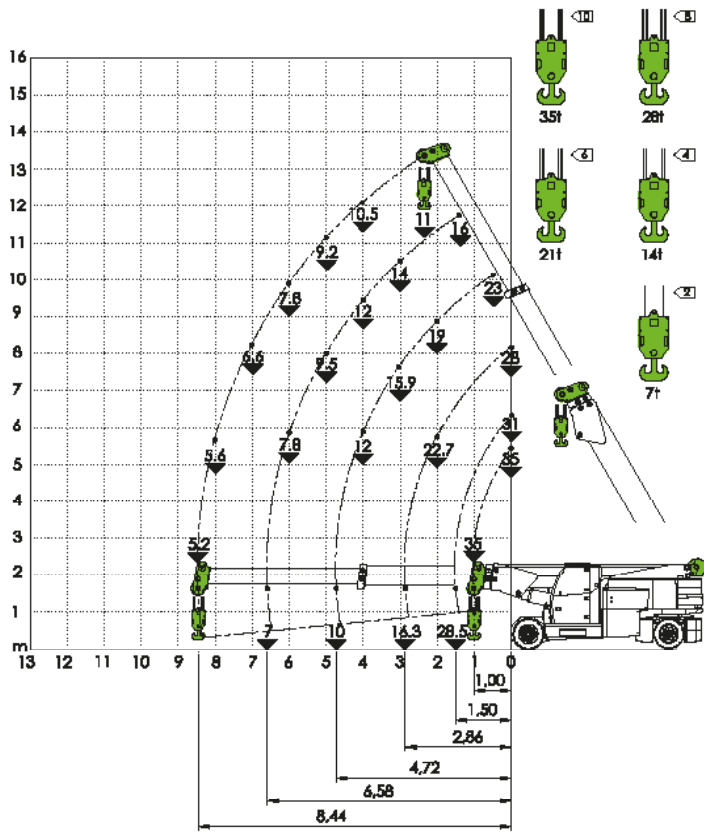
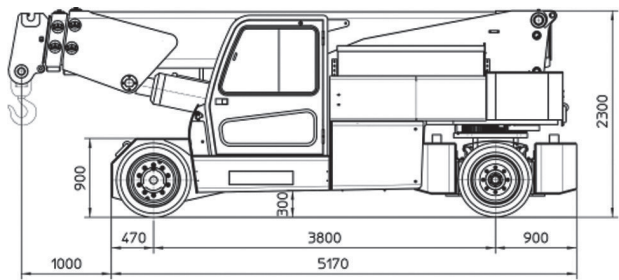


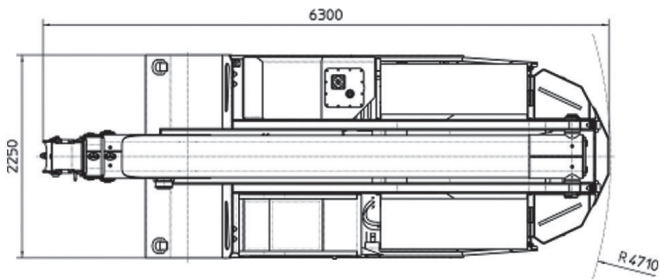
DIAGRAMMA PORTATE ARGANO IDRAULICO



DIMENSIONI DI INGOMBRO



mm



JMG movetosolution

